



**RAILFORUM**  
KOUVOLA - FINLAND

**Jaakko Saha**














**LUOVUTUSPÄÄTÖS**




1 ( 1 )

## Lopullinen vienti

Viejä  Atria Suomi Oy  Atriantie 1 FI - 60550 Nurmo	Tunnus FI1800395-5T0001	Ilmoitus EX   A	T.erien määrä 1	Kollimäärä 2499	Luovutuspäivä 22.07.2019	
		Tapahtumatunnus 2 20066 19203 0003 00				Vientipäivä 22.07.2019
		MRN 19FI000000652312E3				Laatimispäivä 22.07.2019
Vastaanottaja  Group Inc  CN - 5180 District, Shenzhen	Tunniste	Viite 9000105636			Lähetysmaa FI	
		Lisäviite  Viitenro: 9000105636 Vastaanottaja: Group Inc MRN: 19FI000000652312E3 Tapahtumanro: 22006619203000300				Vientimaa
Edustaja  Tuoretie Oy Itikanmäenkatu 3 FI - 60100 Seinäjoki	Tunnus FI0879291-1T0001	Edustaja 2	Edustaja 2			


 Läheta oikaisu | Näytä XML | E-mail ilmoitus | Tulosta PDF | Luo Passitus  
 Mitätöintipyyntö | Läheta liitetiedosto

**Vahvistussanomaiset:**

 2019-07-26 09:33:01 (TPL) <b>Poistumisvahvistus</b>	 2019-07-22 13:50:01 (TLU) <b>Vientimenettelyyn luovutus</b>	 2019-07-22 13:50:01 (TVS) <b>EAD</b>
--	---	--



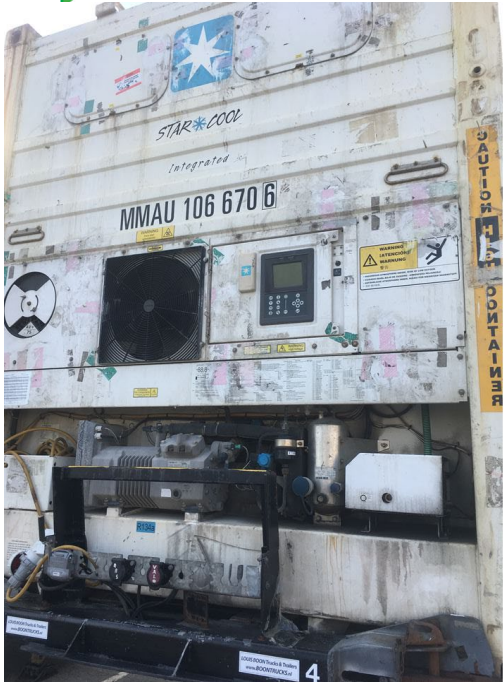
# Bill of Lading

		<b>BILL OF LADING FOR OCEAN TRANSPORT OR MULTIMODAL TRANSPORT</b>	
		SCAC MAEU	B/L No. 969403084
Shipper ATRIA FINLAND LTD. ATRIANTE 1 60550 SEINAJOKI Finland		Booking No. 969403084	Export references Svc Contract 297112410
		Onward inland routing (Not part of Carriage as defined in clause 1. For account and risk of Merchant)	
Consignee (negotiable only if consigned "to order", "to order of" a named Person or "to order of bearer") Group Inc.  5180 District, China		Notify Party (see clause 22) Group Inc.  5180 District, China	
Vessel (see clause 1 + 19) BOMAR VALOUR	Voyage No. 930W	Place of Receipt. Applicable only when document used as Multimodal Transport B/L. (see clause 1)	
Port of Loading Helsinki	Port of Discharge Xingang	Place of Delivery. Applicable only when document used as Multimodal Transport B/L. (see clause 1)	

**PARTICULARS FURNISHED BY SHIPPER**

Kind of Packages; Description of goods; Marks and Numbers; Container No./Seal No.	Weight	Measurement
MMAU1054942 ML-FI1692609 40 REEF 9'6 2499 crt 25839.660 KGS 50.000 CBM Temperature: -21.0 C Shipper Seal : S743109 000849 SHIPPER'S LOAD, STOW, WEIGHT AND COUNT  FREIGHT PREPAID  Goods shipped in refrigerated container(s) set at shipper's requested carriage temperature as per above  CY/CY  <p style="color: red; font-size: small;">Below freight details will not be part of Original Bill of Lading unless requested by customer Above particulars as declared by Shipper, but without responsibility of or representation by Carrier (see clause 14)</p>		

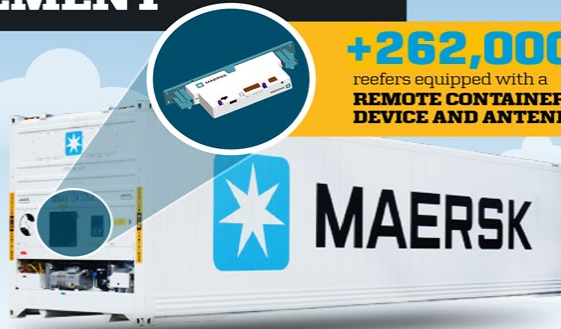
Freight & Charges	Rate	Unit	Currency	Prepaid	Collect
Charges Name Bunker Adjustment Factor Basic Ocean Freight Documentation fee - Destination	Prepaid/Collect Prepaid Prepaid Collect	Invoice Party TUORETIE OY TUORETIE OY CHINA OCEAN SHIPPING AGEN	Customer Code 10300032182 10300032182 40600517TJN	Collection Business Unit Maersk Finland (Helsinki) Maersk Finland (Helsinki) Maersk China Shipping (Tianjin)	






# Satellite-assisted monitoring of containers on the road

## REMOTE CONTAINER MANAGEMENT

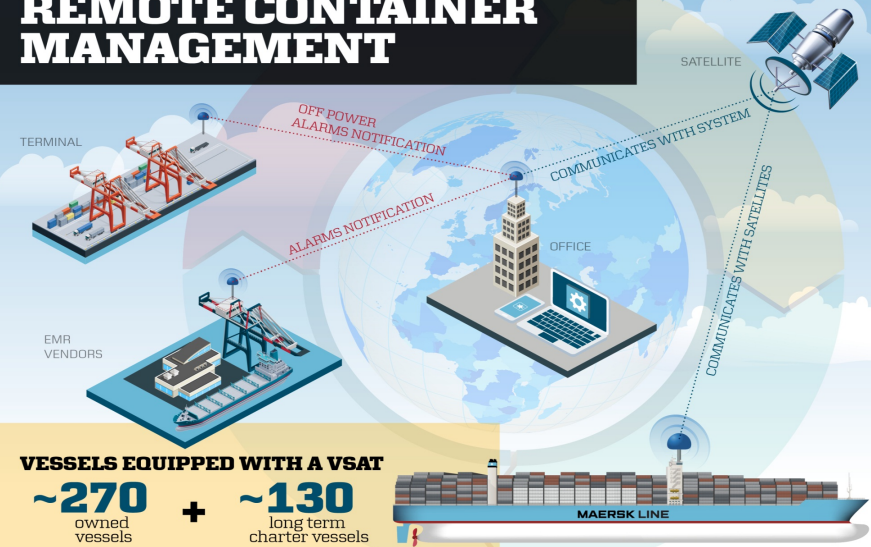
**+262,000**  
reefers equipped with a  
**REMOTE CONTAINER  
DEVICE AND ANTENNA**



### The RCM solution consists of:

-  **1** GPS unit tracks container position on land/sea
-  **1** 3G high temperature SIM card communicates reefer stats and data through GSM to and from central IT system
-  **2** GSM antennae communicate with the RCD and the satellite

## REMOTE CONTAINER MANAGEMENT



### VESSELS EQUIPPED WITH A VSAT

**~270** owned vessels + **~130** long term charter vessels

ILLUSTRATION BY: CREATIVES - MAERSK LINE COMMUNICATION / DETAILS SUBJECT TO CHANGE

# Temperature data provided by a satellite

## Container Readings

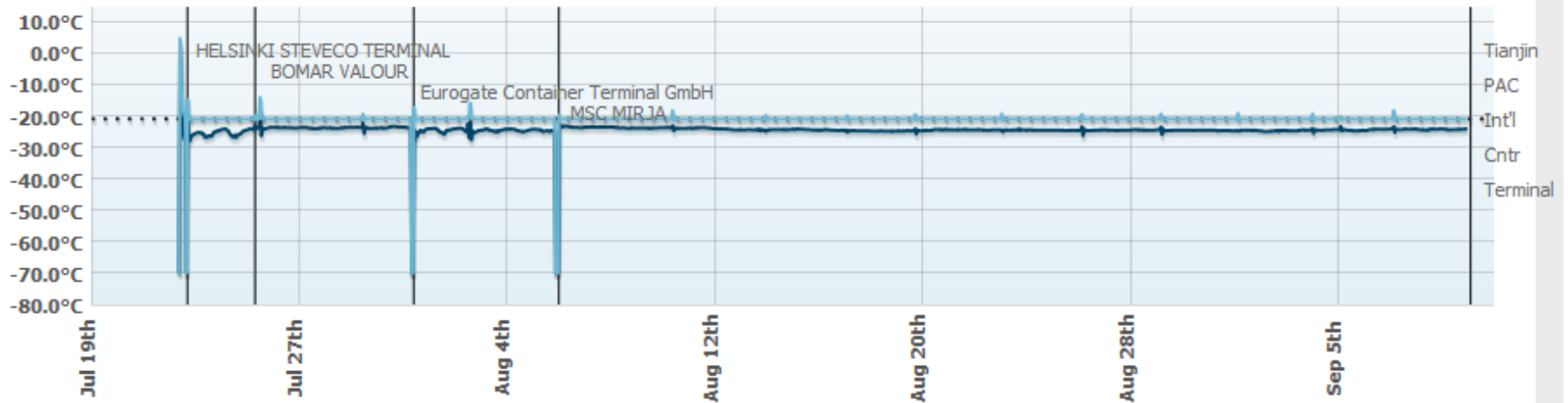
Show entire journey

Show readings ▼

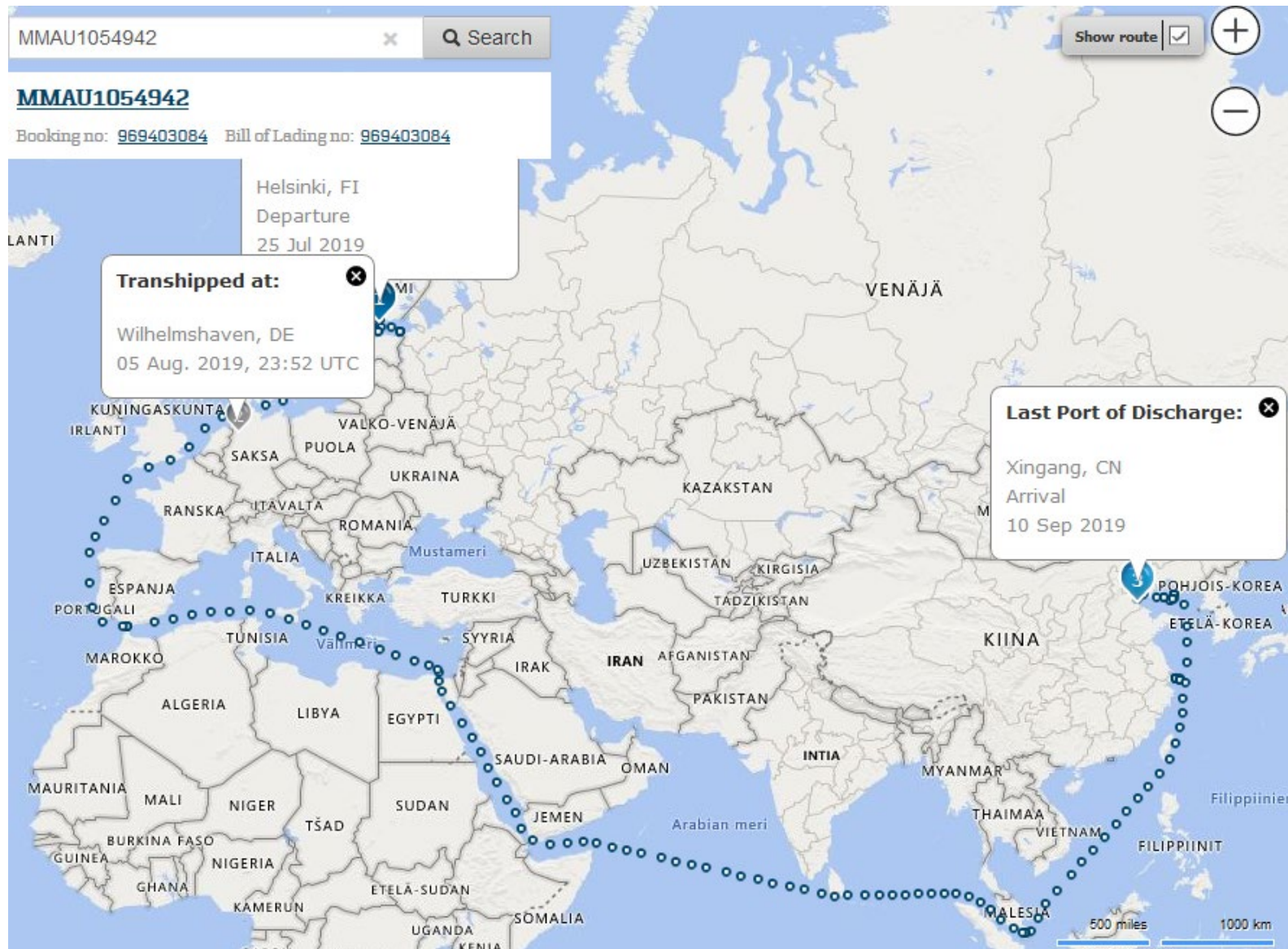
19/07/2019-10/09/2019 ▼

Temperature (C°) as of 09 Sep. 2019, 23:00 UTC

--- Setpoint   ■ Supply air   ■ Return air



# The transport data provided by a satellite



# Cities in China where we deliver goods from Finland



# Opening the container in China



## Matters to be resolved before railway transportation to China is an option?

- **Products covered by the Russian export prohibition – a transit permit?**
- **Seals – must remain intact throughout the entire transport?**
- **Temperature monitoring and related reporting during the transportation?**
- **Which border-crossing station can be used to import meat products to China?**
- **What about documents?**
- **Who owns the products – Waybill transfers ownership immediately unlike Bill of Lading?**
- **Logistic expenses?**
- **Logistic travel time gives the opportunity to use the railway also for chilled products!**





**Kiitos**